

Hydrogen injector for port-fuel injection

For different applications with a wide range of flow rates



- The hydrogen gas injectors enable a high-precision gas supply to each cylinder in hydrogen engines
- Based on already existing natural gas injector, the multi-purpose gas injector is an evolutionary development of in-series technology
- The new hydrogen injector for port-fuel injection is developed to meet the demands of commercial vehicle market requirements
- Dedicated seat design to ensure minimal leakage over lifetime

Up to
8g H₂/s

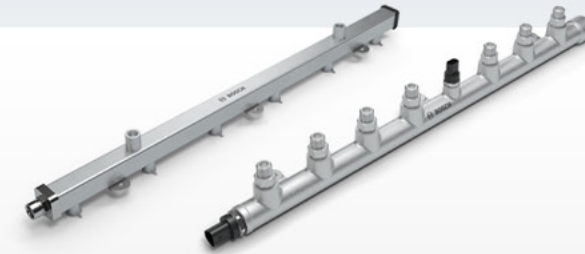
static flow rate @ 15 bar inlet pressure

Scalable
design

to meet flow and powertrain package requirements

Hydrogen injection rail

Ensures a robust H₂ distribution in a variety of powertrains



- Integration of temperature and pressure sensor
- Advanced dimensioning to enable minimized pressure losses and optimized pressure flow
- Robust and standardized H₂ sealing and mounting interfaces
- Usage of proven H₂ compatible materials to ensure highest quality

Scalable
design

to enable different package requirements

Up to
**15 bar (PFI) /
40 bar (DI)**

nominal working pressure